



# GENESIS

## Genesis Look and Feel

---

*MRJ Consultants*

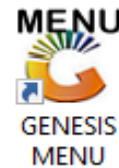
*37 Weavind Ave, Eldoraigne, Centurion, 0157*

*Tel: (012) 654 0300*

*Mail: [helpdesk@mrj.co.za](mailto:helpdesk@mrj.co.za)*



1. This document was compiled by MRJ Consultants and serves as training and reference manual, this manual will give you an overview on what the Genesis Layout looks like.
2. All machines are loaded with SQL Express on the desktop computer, that will give Genesis access to a local temporary database, which will take some of the load of the server and ensure that, in the case of power failure, sales that was busy being capture, will not be lost.
3. All executable files will be stored on the Server's V Drive, and when logging onto the desktop computer, it will then be copied to the C Drive, which also lessens the load on the server and ensures for a faster user experience.



4. On your Desktop will be an icon called **Genesis Menu**, Double click and enter the correct company, your username and password, This will open up Genesis and take you to the Genesis Menu

GENESIS : Main Menu

Select Company

 GENESIS

User Code

Password

CMN999 GENESIS : Main Menu Version : 10.33.51

5. If it's the first time you login with your user code, you will type in your user code with the password – ABC123. You will then be able to change to the password of your choice .

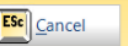
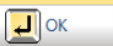
Change System Password

You password must be changed.  
Please enter and Confirm your New Password

User

New Password

Confirm Password

CMN999A GENESIS : Change System Password

6. You will then be prompted to the Genesis main menu.

8. The Genesis Main Menu is a bit long for this description, in this example we have split it into 3 parts.

**GENESIS : Main Menu**

**LIQUOR SIMULATION - SIMULATION**

Till Module   Stock Control   Creditors   Debtors   Purchasing   Point of Sale

2021/10/04   11:17:11   ?   **User : ALEX**   **Version : 10.33.51**

The date   Current time   The user logged in   Current version

Technical Notes

Hide   Back   Forward   Print

Contents   Index   Search

- Technical Documentation
  - Technical Documentation
  - Modules
  - How to Guides
  - Services

**GENESIS SOFTWARE**

**Technical Support Document**

This document details the various technical processes within the Genesis programs & modules.

It is aimed mainly at the Genesis Support Personnel to enable them to set up and activate various internal functions and shortcuts for the purpose of System Maintenance and Support.

This document also details the various parameters and access codes that activate or enable various features within each module and within each form.

Reports   Cash Office   General Ledger   System Utilities   Empties Return   FIX

**Period : 202110**   **Database : GENESIS-SIMULATION**

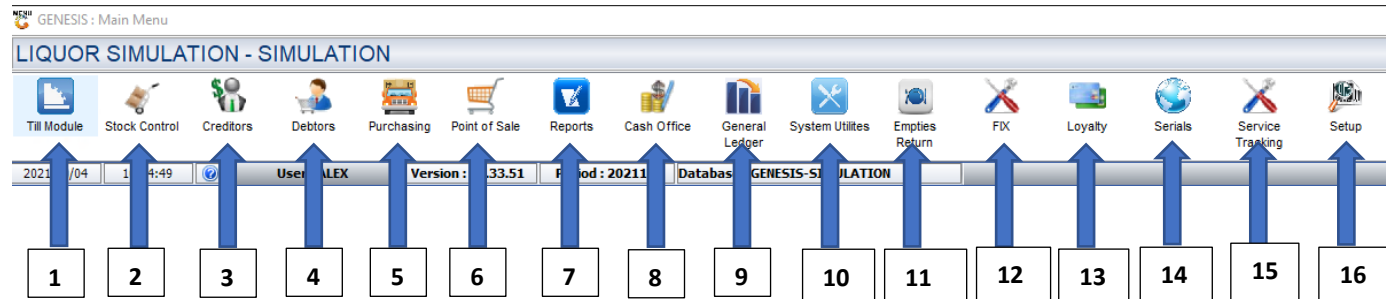
Accounting Period   Genesis Database Name

Loyalty   Serials   Service Tracking   Setup

**Company : [SIMUL] LIQUOR SIMULATION**

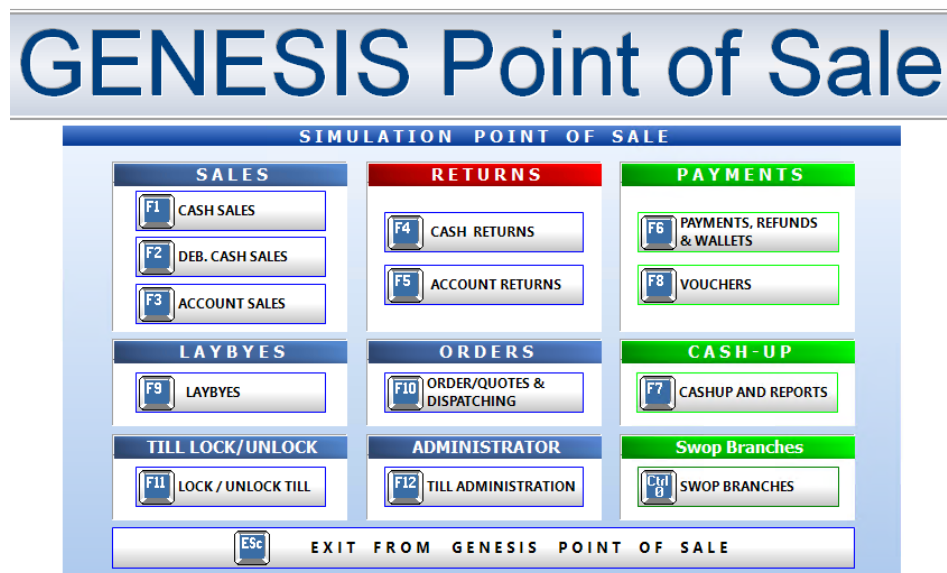
Company logged into

The Genesis Menu will be displayed on the top of your screen, to open a selected module, simple click on the icon.

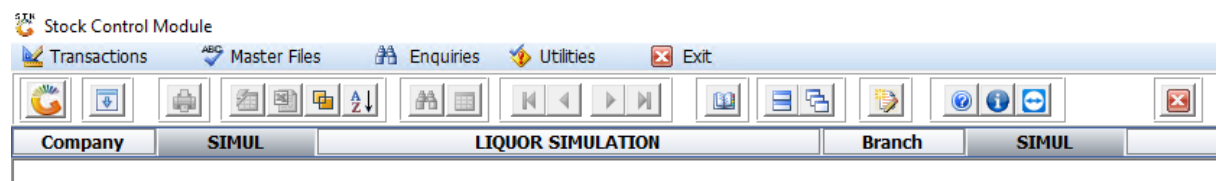


## 1. Till Module

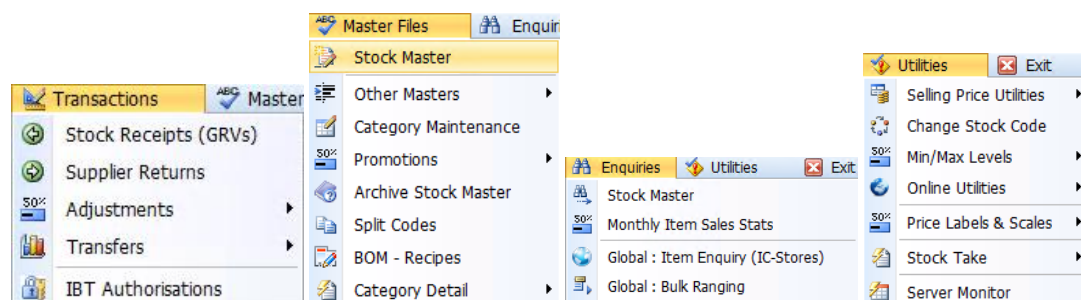
In the till module Genesis has:



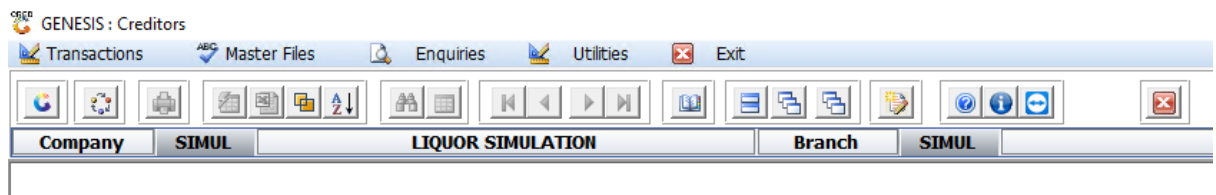
## 2. Stock Control



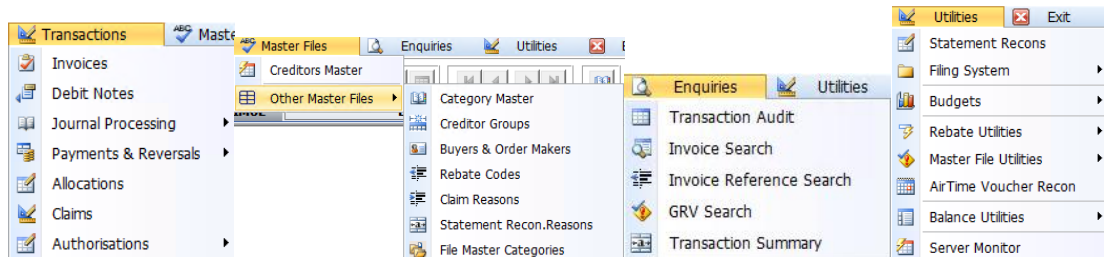
In the Stock Control module Genesis has:



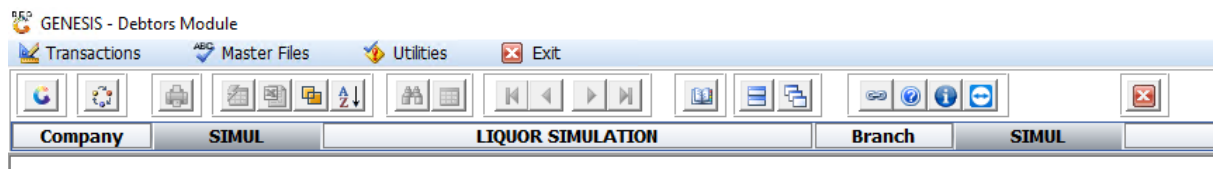
### 3. Creditors



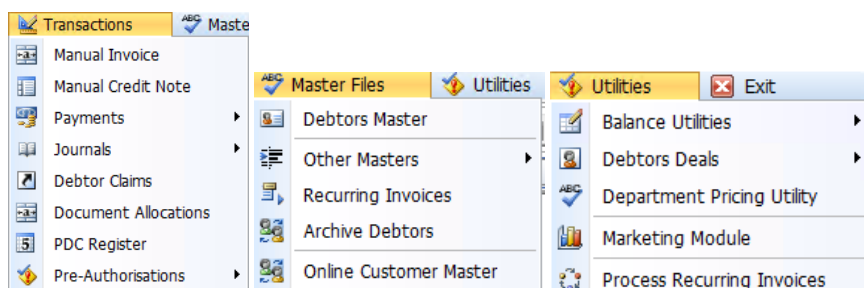
In the Creditors module Genesis has:



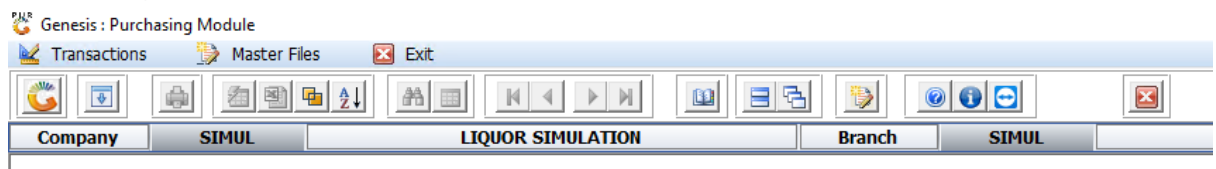
### 4. Debtors



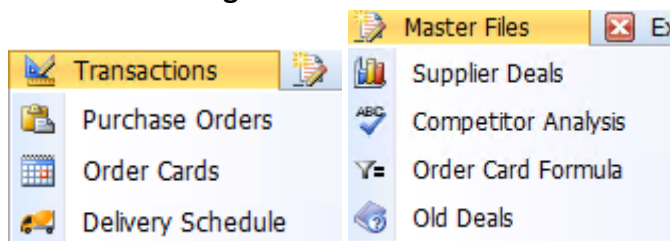
In the Debtors module Genesis has:



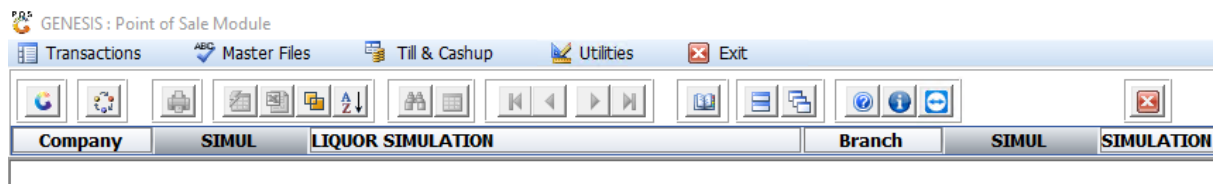
### 5. Purchasing



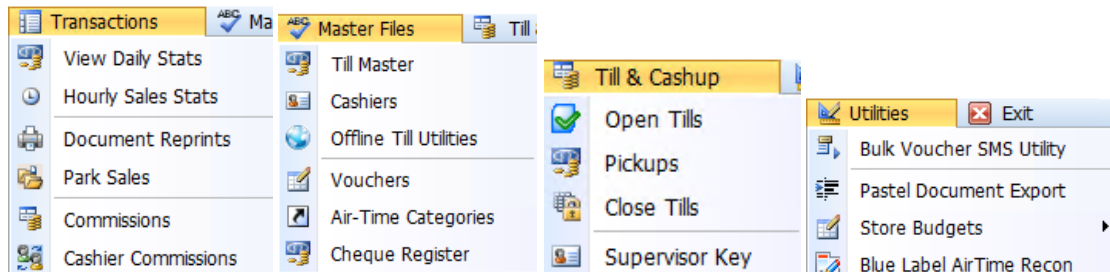
In the Purchasing module Genesis has:



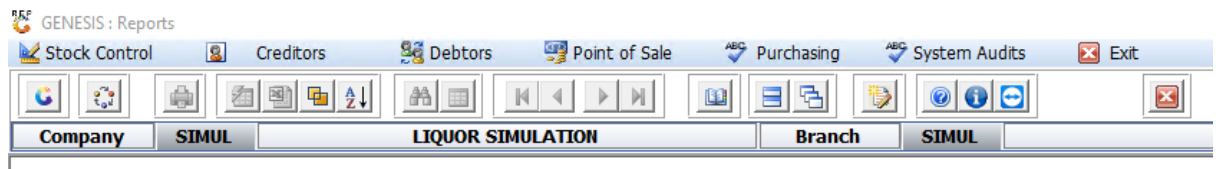
## 6. Point of sale



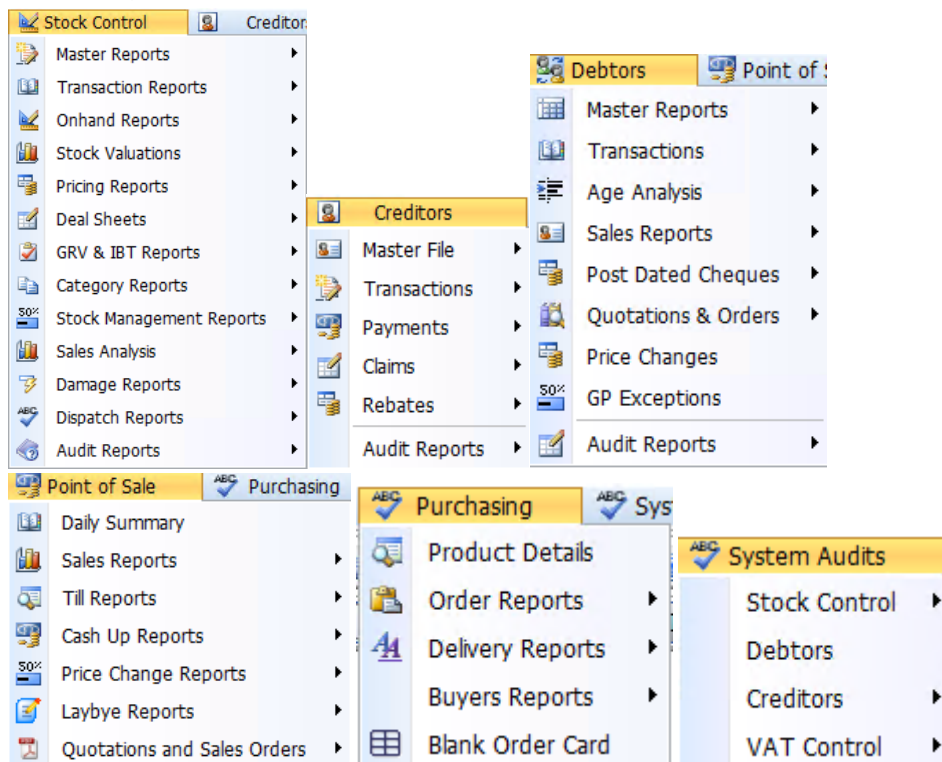
In the Point-of-Sale module Genesis has:



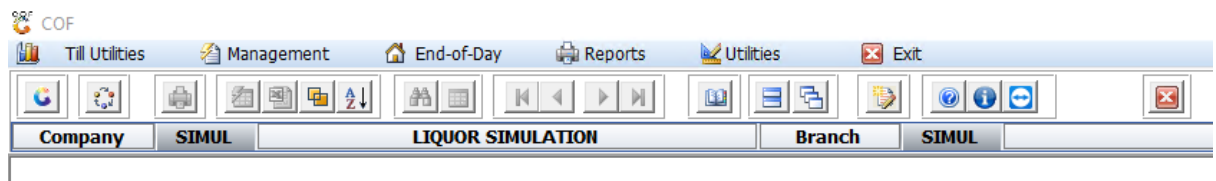
## 7. Reports



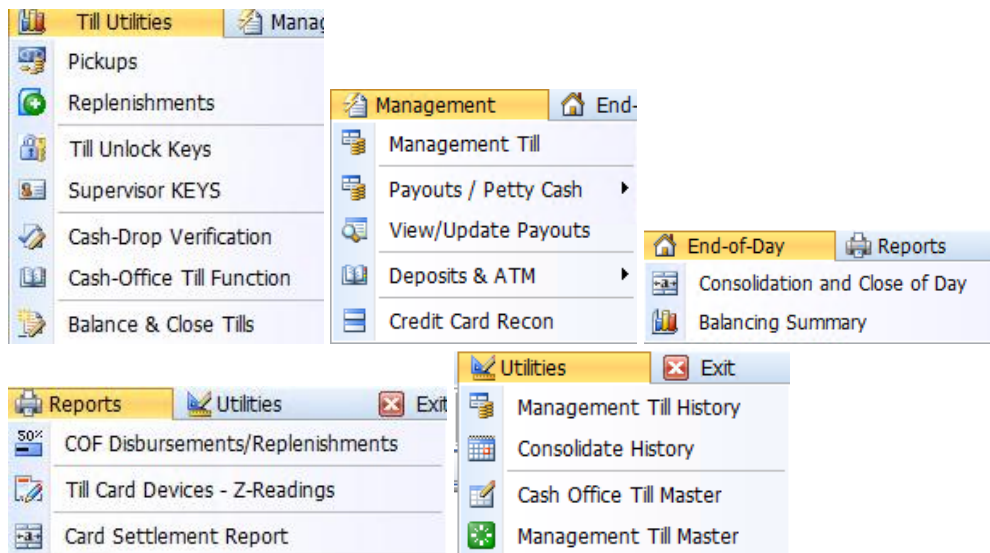
In the Reports module Genesis has:



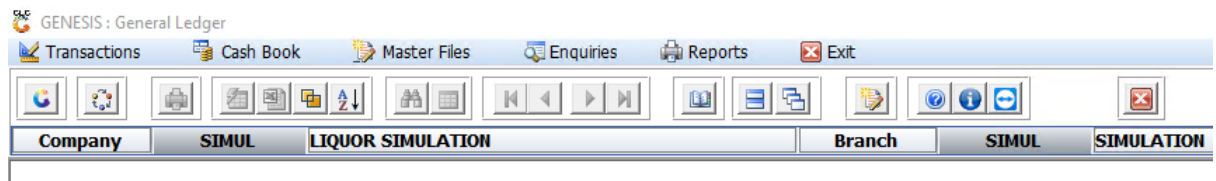
## 8. Cash Office



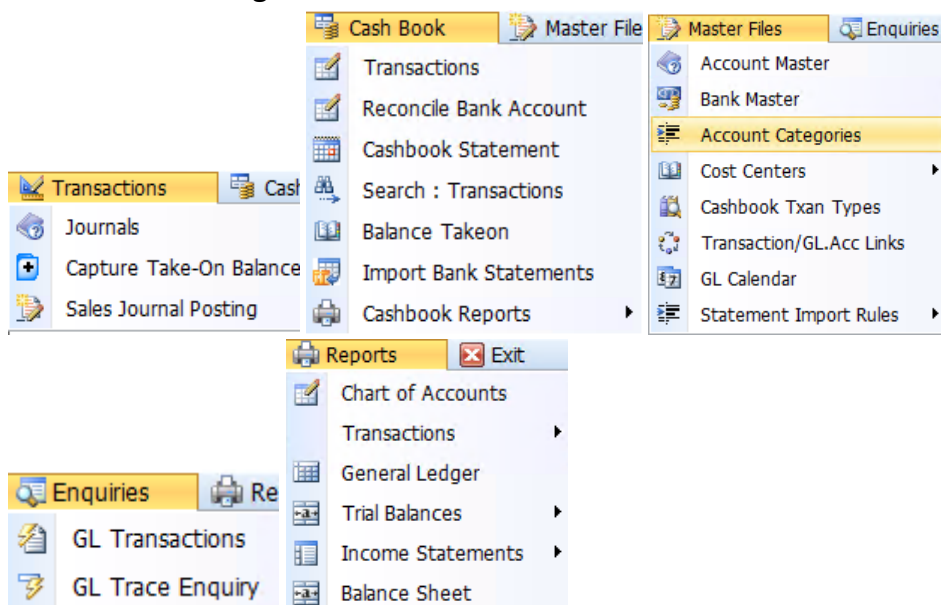
In the Cash Office module Genesis has:



## 9. General Ledger

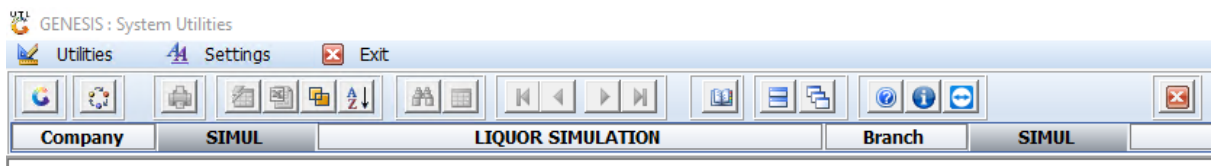


In the General Ledger module Genesis has:

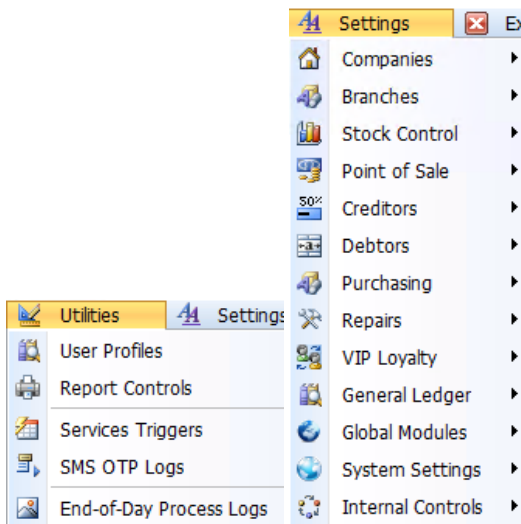




10. System Utilities



In the Systems Utilities module Genesis has:



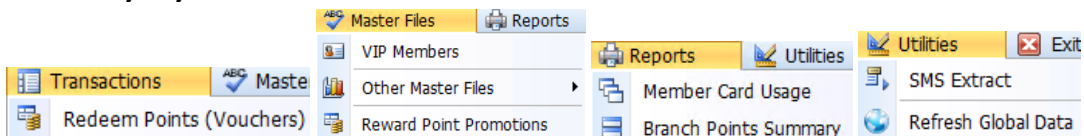
11. Empties Return

12. Fix

13. Loyalty

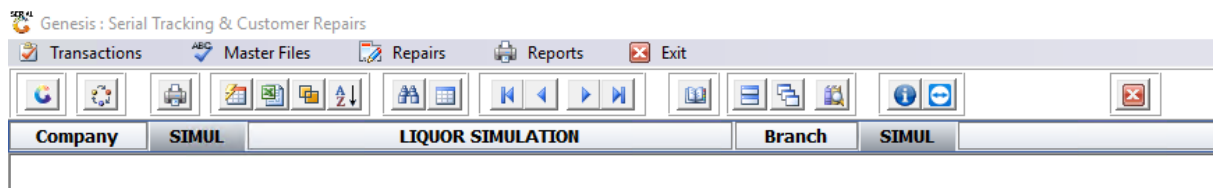


In the Loyalty module Genesis has:

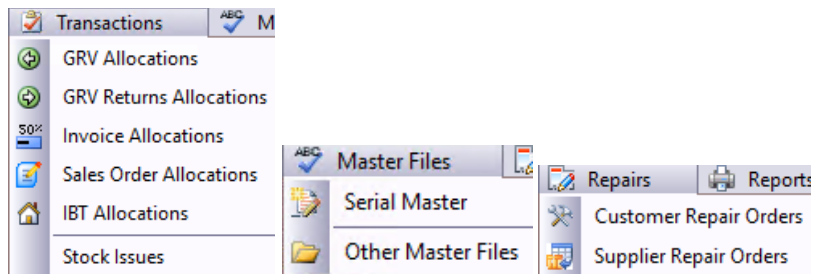




## 14. Serials



In the Serials module Genesis has:



## 15. Service Tracking

## 16. Setup

