



GENESIS

Genesis How to open a management till that was not closed

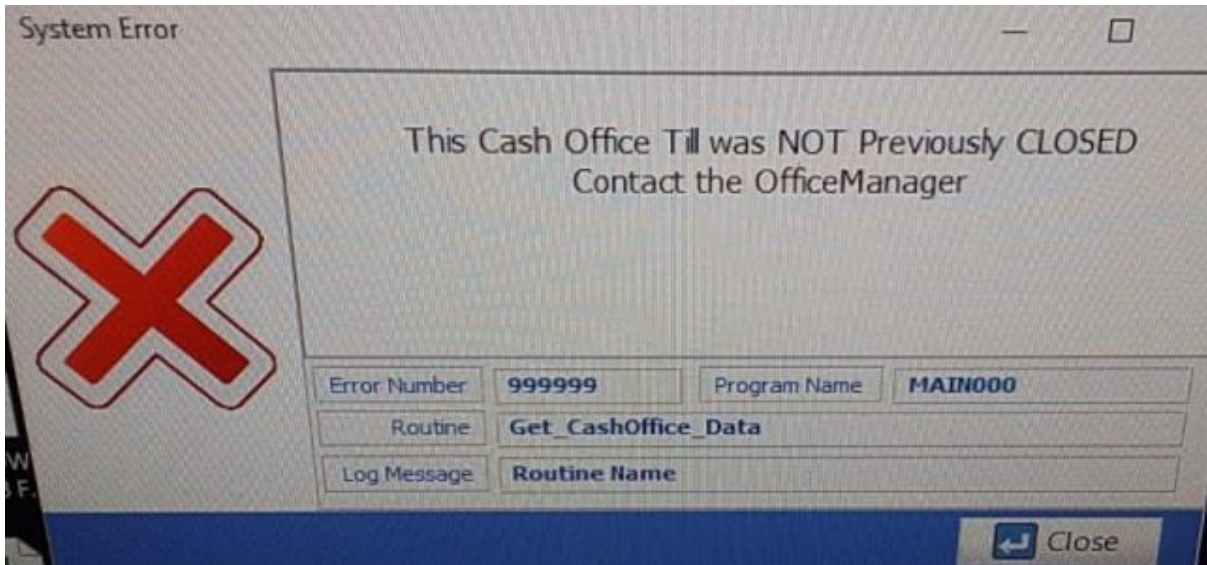
MRJ Consultants

Bondev Office Park, 140 Cattle Egret Rd,
Eldoraigne, Centurion, 0171
Tel: (012) 654 0300

Mail: helpdesk@mrj.co.za



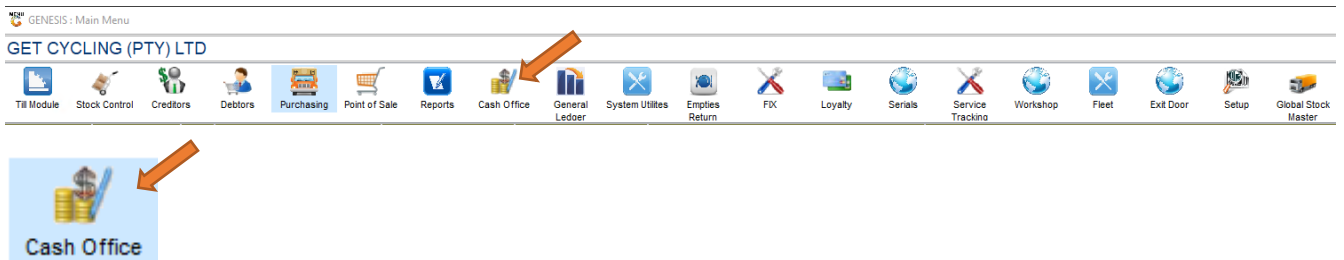
When you get this error follow the below steps



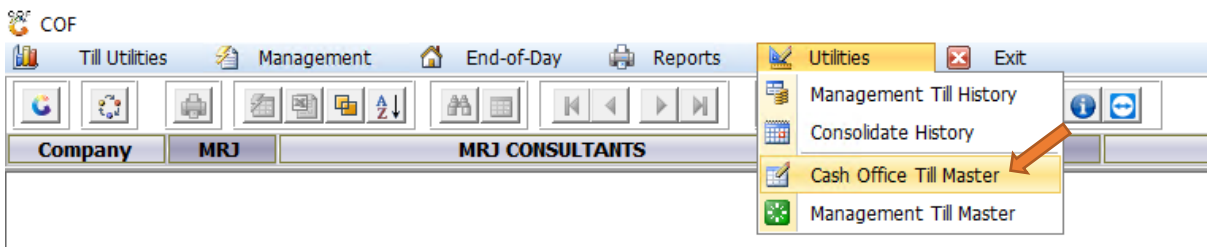
1. Please log into genesis menu



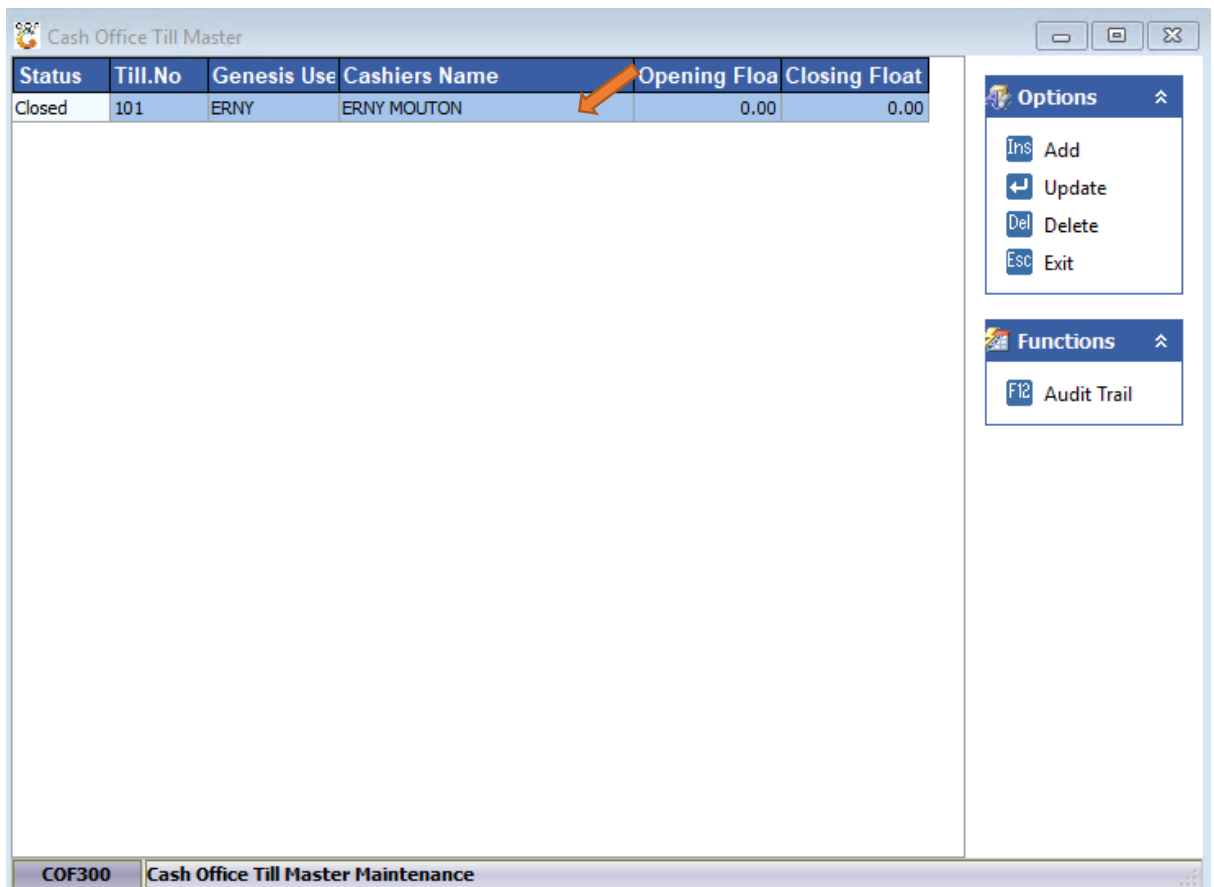
2. Then navigate to Cash Office and Open



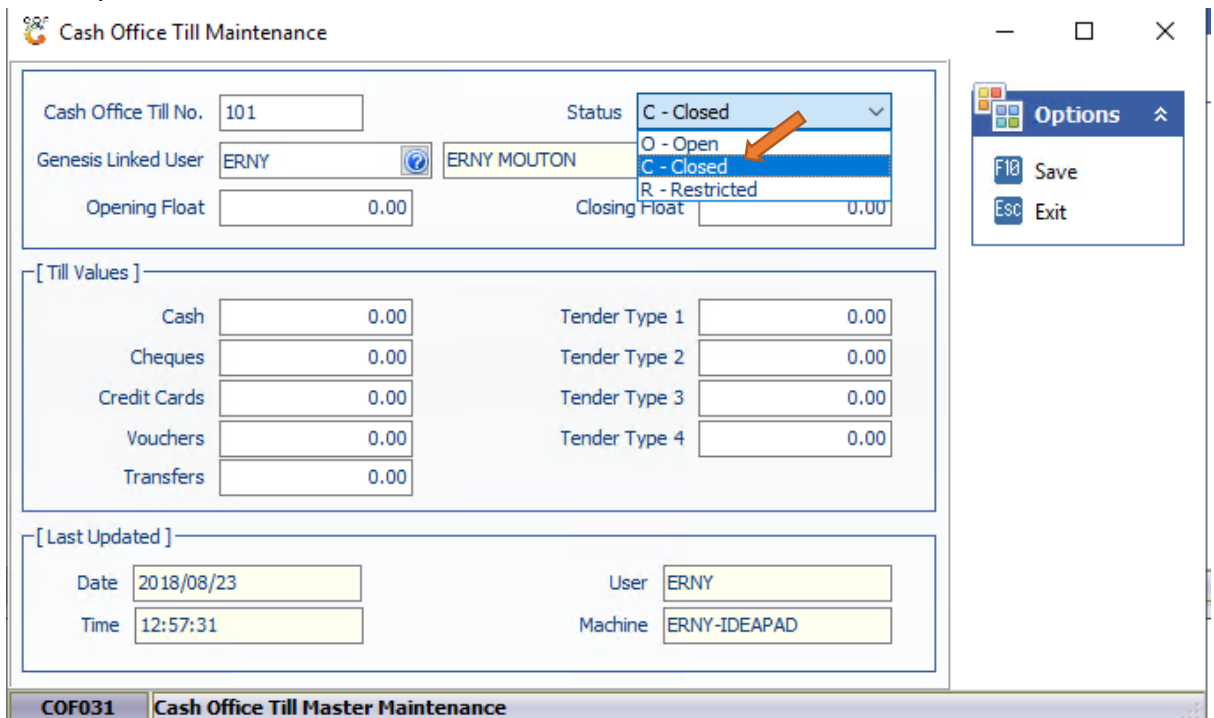
3. Under Utilities open Cash Office Till Master



4. Select the correct user and open



5. Once opened Select **CLOSED AND SAVE**



6. Close Genesis and login again with the correct user