



GENESIS

How to Guide How to do Clothing Sizing & Colors

MRJ Consultants

37 Weavind Ave, Eldoraigne, Centurion, 0157

Tel: (012) 654 0300

Mail: helpdesk@mrj.co.za



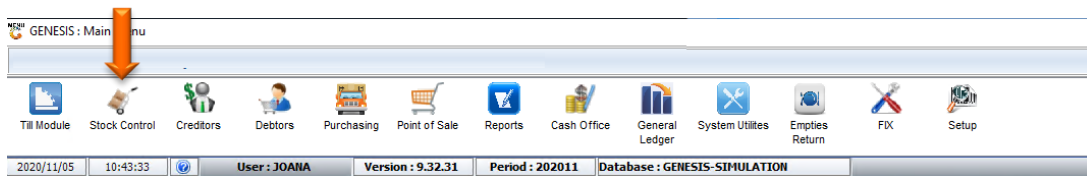
1. **Open Genesis Menu.**



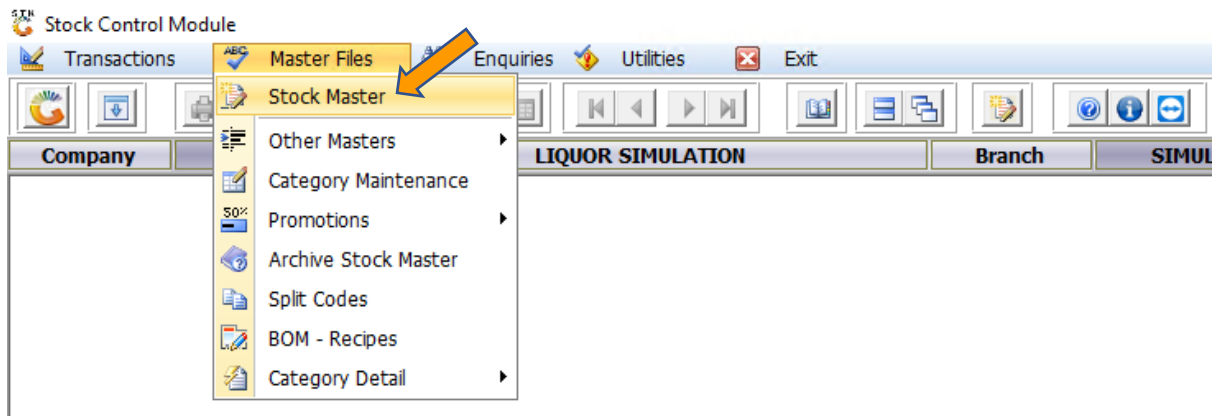
2. Type **User code** and **Password**.

A screenshot of the "GENESIS Main Module" login window. At the top, it says "GENESIS Main Module". Below that is a "Select Company" dropdown menu with "BLUE BOTTLE LIQUOR SIMULATION" selected. To the left is the Genesis logo. To the right are two input fields labeled "User Code" and "Password", with orange arrows pointing to them. Below the input fields are "Cancel" and "OK" buttons. At the bottom, there is a status bar with "CMN999", "GENESIS Main Module", and "Version : 10.33.51".

3. Open **Stock Control** from the Main menu.



4. Select **Stock Master**



5. When creating a stock item that includes the Shirt sizing and colors you will have to make sure that each item is created separately with its color (i.e. Woolworths shirt blue, red, green, etc).

- The Stock Type will have to be N-Normal Stock Item
- The Description will have to be the shirts color

Stock Control : Stock Master Maintenance

Stock Code: Auto-Generate [Rule: 3] Description #1: Woolworths shirt blue

Stock Type: N - Normal Stock Item Description #2:

*Status: A - Active Pack Size: 1X1X1 Units/Pack: 1

Options: Save, Exit

Header Data: Department, Sub-Dept., Supplier, Buyer

Costs Prices: VAT Code (S STANDARD RATE 15), Barcode, Supplier Code, Scale Item Type (N - Non-Scale Item), Scale Price/Kg (N - Non Scale Item)

Pack Sizes: Units/Case (1, 0.00), Units/Palette (1, 0.00), Singles (1, 0.00)

Onhand Main W/H: 0.00

Onhand (All W/H): 0.00

Sales Orders: 0.00

on Laybye: 0.00

Purchase Orders: 0.00

NETT Available: 0.00

Awaiting Dispatch: 0.00

NETT On Floor: 0.00

Damaged: 0.00

Min/Max Level: 0, 0

Number of Variants: 0

Belongs to Kits: 0

STK101 Stock Control Module : Stock Master Maintenance ADD NEW ITEM

- Fill in all relevant information and cost pertaining to the stock item then save.

Stock Control : Stock Master Maintenance

Stock Code: Auto-Generate [Rule: 3] Description #1: Woolworths shirt blue

Stock Type: N - Normal Stock Item Description #2:

*Status: A - Active Pack Size: 1X1X1 Units/Pack: 1

Options: Save, Exit

Header Data: Department, Sub-Dept., Supplier, Buyer

Costs Prices: Last Cost Excl. (0.01), Last Cost Incl. (0.01), Avg. Cost Excl. (0.01), Avg. Cost Incl. (0.01), Rebate Last.Excl (0.00), Rebate Avg.Excl (0.00), Nett.Last.Reb.Ex (0.00), Nett.Avg.Reb.Ex (0.00), Rebates (Off.Inv) (0.00 %), Rebates (Claimed) (0.00 %), Cost Code

Buying Costs: Supplier List Excl. (0.00), Supplier List Ind. (0.00), Buying Cost Excl. (0.01), Buying Cost Ind. (0.01)

Selling Price Calculated on Base: Base Cost Excl. (0.01), Base Cost Ind. (0.01)

Cost Calculation in BUY Units: Buy Item Code, Buy Item Units/Pack (0)

	per Buy.Cost	per Avg.Cost	per Last.Cost
Selling Incl.			
Cost Incl.			
Profit (Excl)			
GP%			
Rebates			
Net.Cost Incl.			
Net Profit (Excl)			
Net GP%			

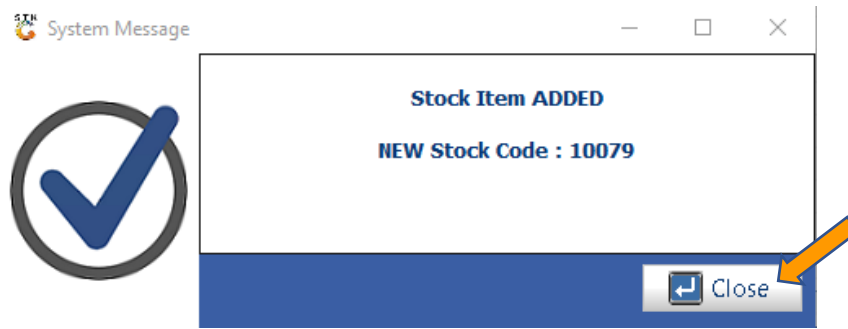
The Base Cost is derived from Suppliers Deal & Discounts and calculated at Purchase Order Time

[Last Received by (GRV)]

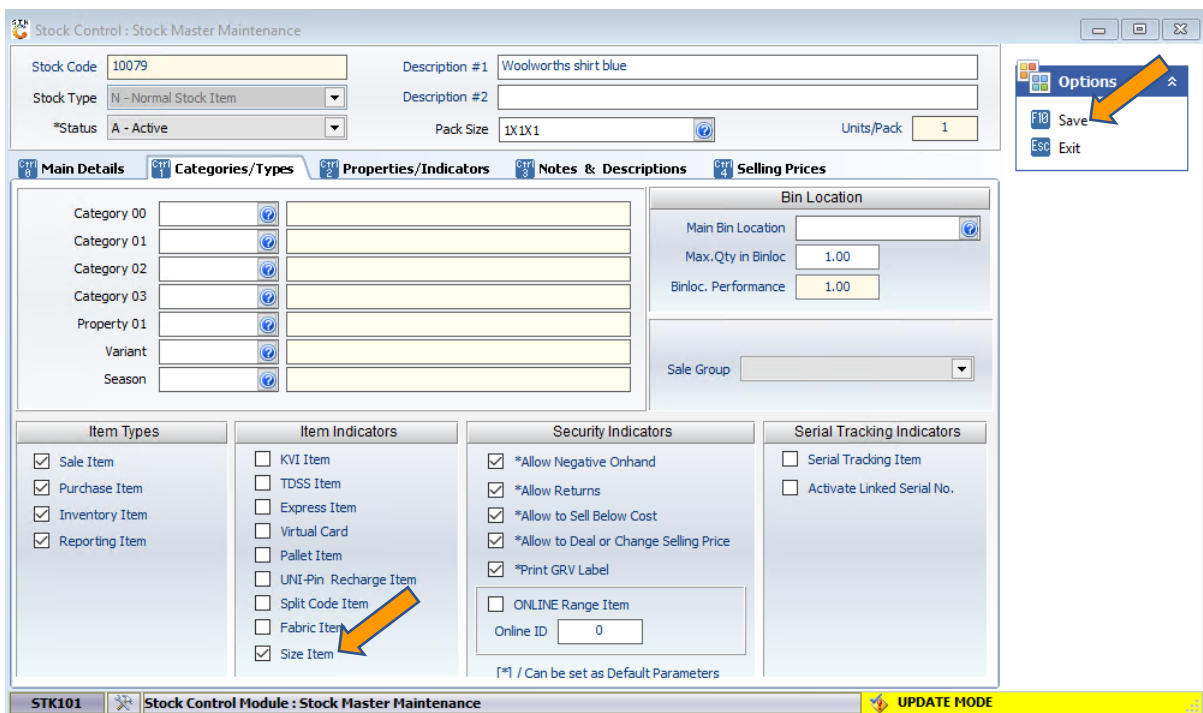
Supplier Acc.:

STK101 Stock Control Module : Stock Master Maintenance ADD NEW ITEM

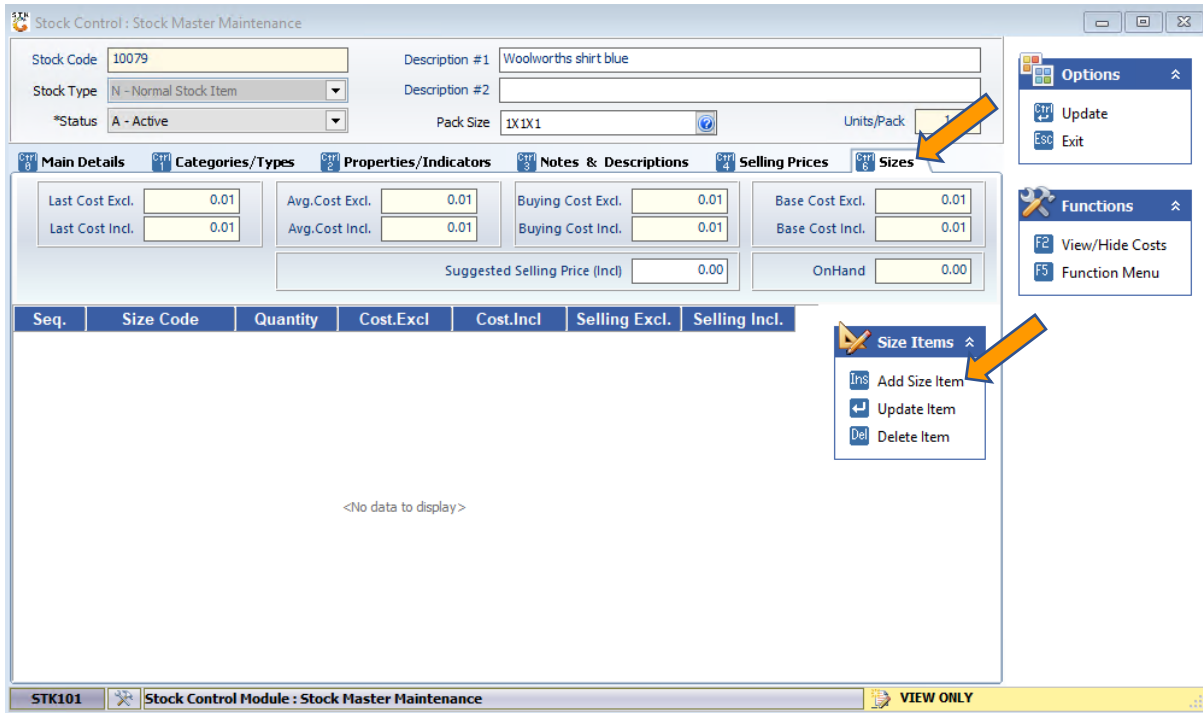
- Complete the stock creation



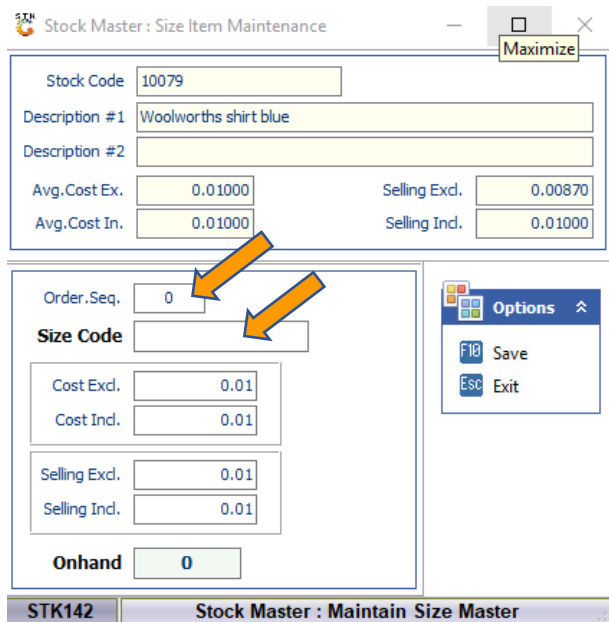
6. Go back into the stock item that you created and under Category/Types Select the Size Item Tick box and save.



- Go out then back into the Stock item and a new tab will appear called Sizes here you can now add the size items



- The sizes will have to be added, under order sequence start from 1 up to make sure you have a neat sequence. Put the size code for the shirt such as S,M,L,XL,XXL and so on. Then save.



9. As you add you will see they automatically populate. Then once done Click on Update.

Stock Control : Stock Master Maintenance

Stock Code: 10079 Description #1: Woolworths shirt blue
 Stock Type: N - Normal Stock Item Description #2:
 *Status: A - Active Pack Size: 1X1X1 Units/Pack: 1

CTF 0 Main Details CTF 1 Categories/Types CTF 2 Properties/Indicators CTF 3 Notes & Descriptions CTF 4 Selling Prices CTF 5 Sizes

Last Cost Excl. 0.01 Avg. Cost Excl. 0.01 Buying Cost Excl. 0.01 Base Cost Excl. 0.01
 Last Cost Incl. 0.01 Avg. Cost Incl. 0.01 Buying Cost Incl. 0.01 Base Cost Incl. 0.01
 Suggested Selling Price (Incl) 0.00 OnHand 0.00

Seq.	Size Code	Quantity	Cost.Excl	Cost.Incl	Selling Excl.	Selling Incl.
1	S	0	0.01	0.01	0.01	0.01
2	M	0	0.01	0.01	0.01	0.01
3	L	0	0.01	0.01	0.01	0.01
4	XL	0	0.01	0.01	0.01	0.01
5	XXL	0	0.01	0.01	0.01	0.01

Size Items
 Ins Add Size Item
 ← Update Item
 Del Delete Item

STK101 Stock Control Module : Stock Master Maintenance VIEW ONLY

10. If the clothing has different Barcodes, you can add them in as follows.

a. Open the item and on the right hand side select function Menu

Stock Control : Stock Master Maintenance

Stock Code: 10079 Description #1: Woolworths shirt blue
 Stock Type: N - Normal Stock Item Description #2:
 *Status: A - Active Pack Size: 1X1X1 Units/Pack: 1

CTF 0 Main Details CTF 1 Categories/Types CTF 2 Properties/Indicators CTF 3 Notes & Descriptions CTF 4 Selling Prices CTF 5 Sizes

CTF 7 Header Data

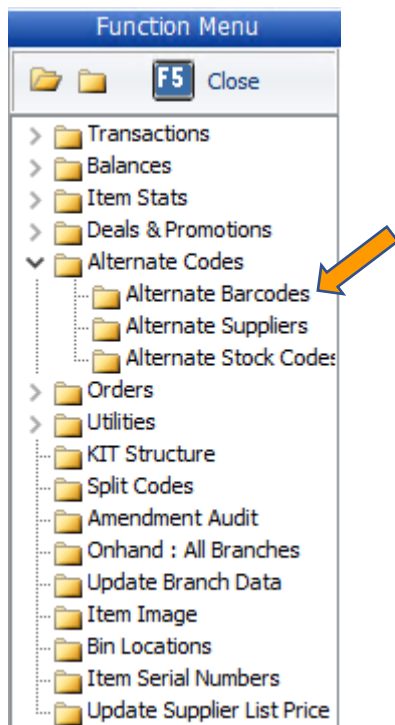
Department Sub-Dept. Supplier Buyer
 VAT Code: S STANDARD RATE 15
 Barcode Supplier Code Scale Item Type: N - Non-Scale Item Scale Price/Kg: N - Non Scale Item
 Pack Sizes: Units/Case 1 0.01, Units/Palette 1 0.01, Singles 1 0.00
 Sell by: 0 Days Shelf Life: 0 Days

Onhand Main W/H -3
 Onhand (All W/H) -3
 Sales Orders on Laybye 0
 Purchase Orders 0
 NETT Available -3
 Awaiting Dispatch 0
 NETT On Floor -3
 Damaged 0
 Onhand (OTB) 0.00
 Min/Max Level 0 0
 Number of Variants 0
 Belongs to Kits. 0

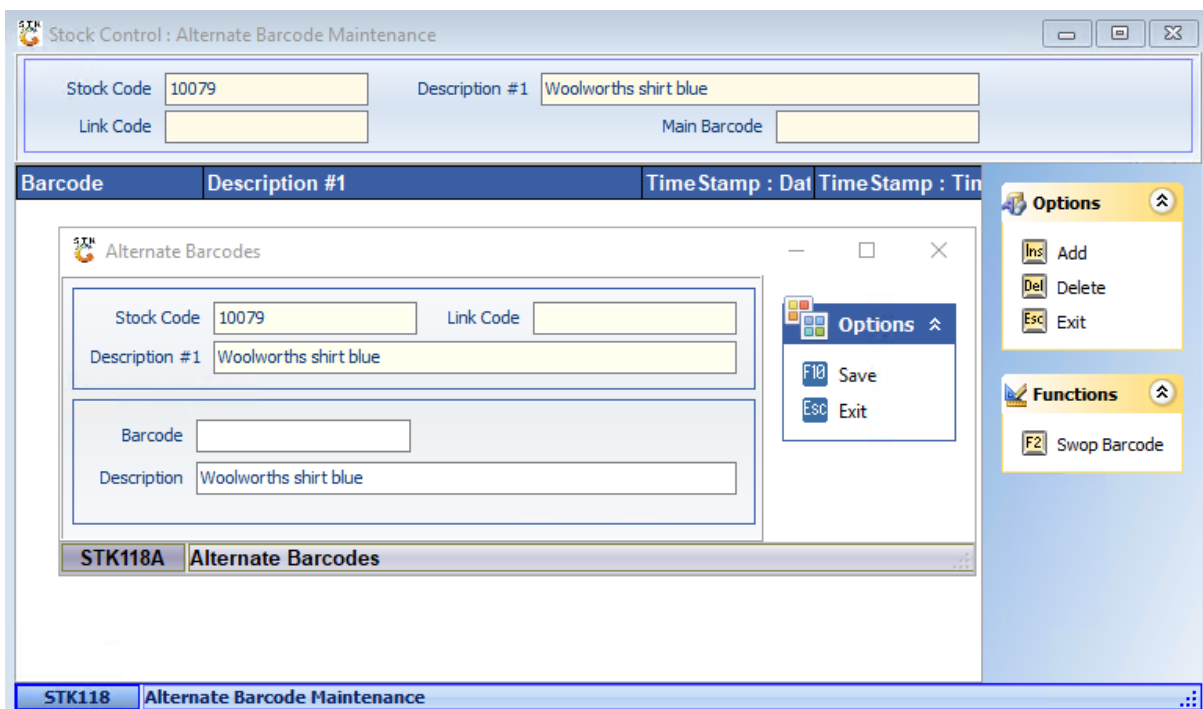
Functions
 F2 View/Hide Costs
 F5 Function Menu

STK101 Stock Control Module : Stock Master Maintenance VIEW ONLY

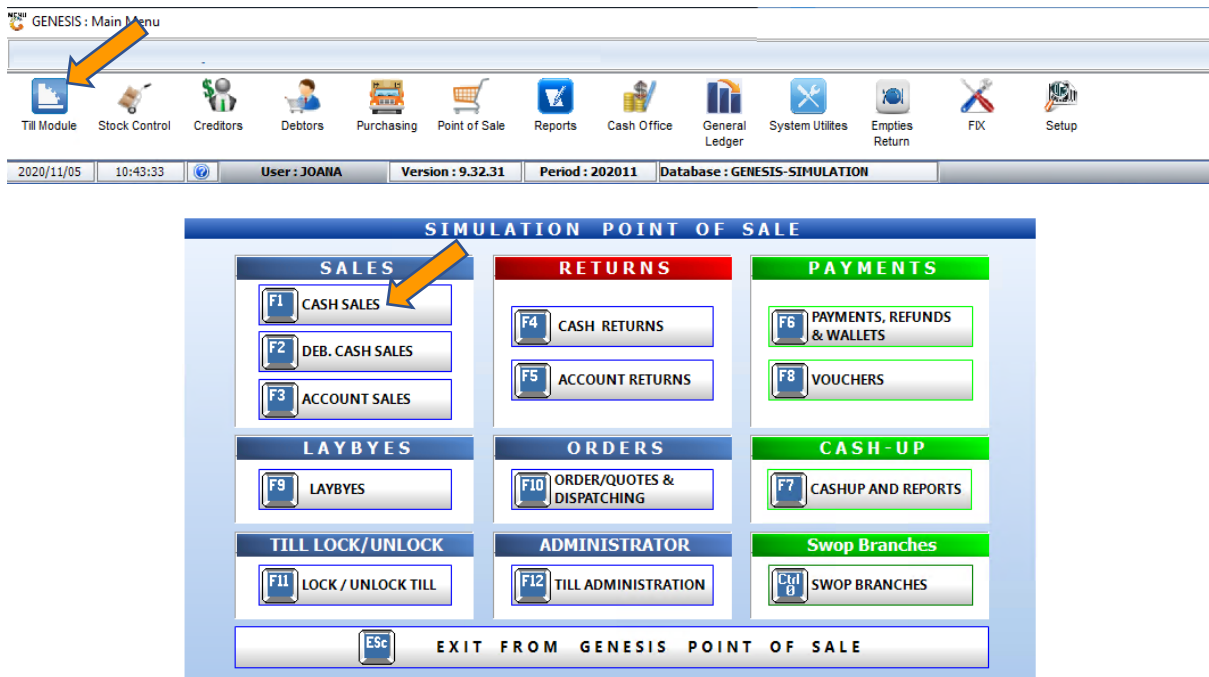
b. Select the Alternate Barcode option.



c. Here you can add as many barcodes as you would like.



11. Doing a sale on the till go to the till module then do a cash sale and select the item.



12. Once you have selected the item enter through

STOCK ITEM	
Stock Code	10079
Link Code	
Description #1	Woolworths shirt blue
Description #3	Woolworths shirt blue
Quantity	1
Price	0.01
Discount	0.00
Warehouse	01 - DEFAULT WAREHOUSE
Salesrep	GEN - GENERAL SALES

13. You will be prompted to the following where you can select the quantity then press Accept Qty to proceed and complete the sale.

TA Capture Sizes

Stock Code: 10079 Line No.: 0

Description #1: Woolworths shirt blue

Size	Onhand	Sale Qty.	Selling Excl.	Selling Incl.	Total Incl.
S	0	0	0.01	0.01	
M	0	0	0.01	0.01	
L	0	0	0.01	0.01	
XL	0	0	0.01	0.01	
XXL	0	0	0.01	0.01	

Options

- Accept Qty
- Exit

VTILL002C Capture Sizes

Item Code	Link Code	Item Description	Qty	Price	Discount	Line Total
10079		Woolworths shirt blue Size: M	1	0.01	0.00000	0.01
10079		Woolworths shirt blue Size: L	2	0.01	0.00000	0.02

TA System Print Request

PRINT REQUEST

Cash Sales

Document No. : 1101028035

No Yes

VTILL990F System Print Request

13 When GRV the Stock items in go into the GRV and select the stock item, put in the GRV Quantity amount with Pricing then enter through.

Stock Receipts : GRVs - Line Maintenance

Stock Code: 10079 Link Code: GRV Line Number: 1

Description #1: Woolworths shirt blue

Description #2:

Receive Val

Quantity: 20

Free Quantity: 0

Price Excl.: 0.01000

Discount Excl.: 0.00000

VAT: 0.03000

Total Excl.: 0.20000

Doc. Discount: 0.00000 Doc. Charges: 0.00000

Net. Cost Excl.: 0.01000

GRV Line Stats Selling Prices

PR.Code	Description	Excl.	Incl.	GP%	New Excl.	New Incl.	New GP%	Price
01	DEFAULT PRICE	0.01	0.01	-15.00	0.00	0.00	0.00	I - Incl

STK202 GRV - Detail Lines

14. You will then be prompted to the following where you can enter in the sizing Received QTY then press F10 or click on save to proceed.

Stock Receipts : GRVs - Capture Sizes

Stock Code: 10079 GRV Quantity: 20

Description: Woolworths shirt blue Received Sizes: 0

	Size	Receive Qty	Cost Excl.	Total Excl.
1	S	0	0.01	0.00
2	M	0	0.01	0.00
3	L	0	0.01	0.00
4	XL	0	0.01	0.00
5	XXL	0	0.01	0.00

Options

F10 Save

Esc Exit

Functions

F5 Add Size Code

STK202H GRV - Capture Sizes